

# Vosair air piping system

## Fast, simple and reliable

Our VOSAIR piping system is the most effective solution for your air or gas network.

The quick and easy installation ensures that you can continue your business in record time.

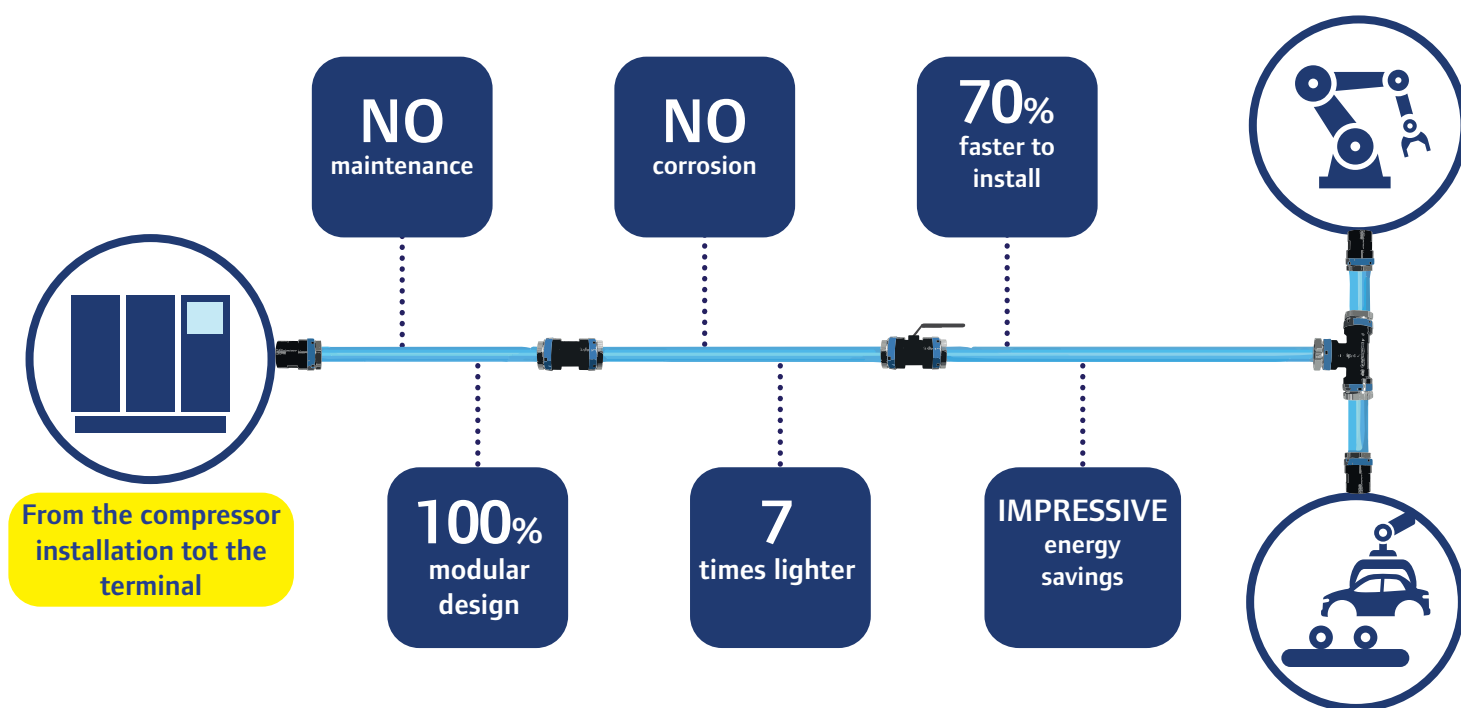
This piping system is often used within industry. We lay pipes in the food industry, shipbuilding, computer industry, agriculture, metal industry and the chemical industry.

The VOSAIR piping system is suitable for low pressures up to 16 Bar.

The VOSAIR network is leak-free and corrosion-free. The pipes and fittings come with a 10-year warranty with annual inspection and maintenance.

The advantage is that it is a reusable piping system, designed in accordance with EN 13480-3 for a fast, simple and reliable distribution network for compressed air, nitrogen, vacuum and other slow gases.

Our piping system has various industrial certifications and offers the highest safety and quality level.

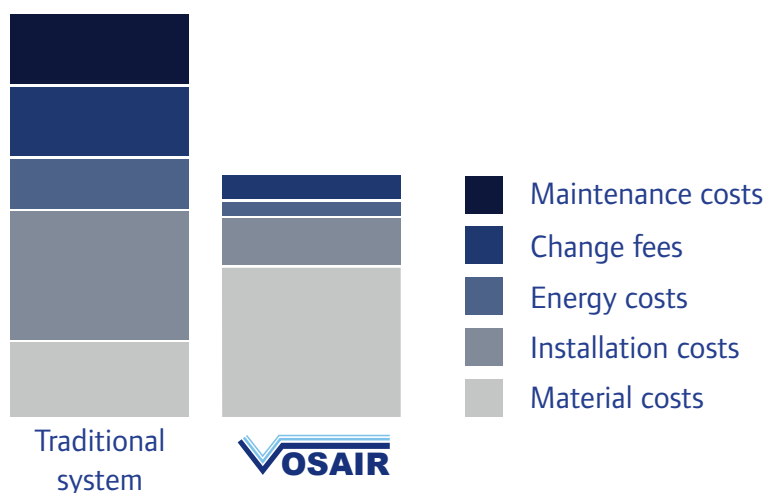


## Total operating costs

### Maximum production, optimum power savings and minimum total costs

The optimal air piping system is measured, planned and installed in which the service and wishes of our customer are central.

Material and product design, installation and maintenance costs, flexibility and safety: they all affect the total operating costs and the degree of efficiency in your production. If you're looking for a high-quality, hassle-free system that can be customized for any manufacturing site, this piping system is the best investment you can make. It is a high-quality aluminum system that specially designed to save money.



The Vosair air piping system offers the lowest operating costs in the long run and is the optimal solution for every application

#### Sustainable air quality

VOSAIR air piping network is a corrosion-resistant, durable system that does not adversely affect the quality of the transported gases.

This minimizes maintenance costs and costs related to protection of the terminal equipment, processes and applications.

#### The pressure is maintained

Did you know that a pressure drop of 1 bar results in a 7% increase in energy consumption?

To avoid such losses, you must ensure that your pipe network is correctly sized, leak-free and maintains the pressure.

# Vosair air piping system

## Continuous airflow

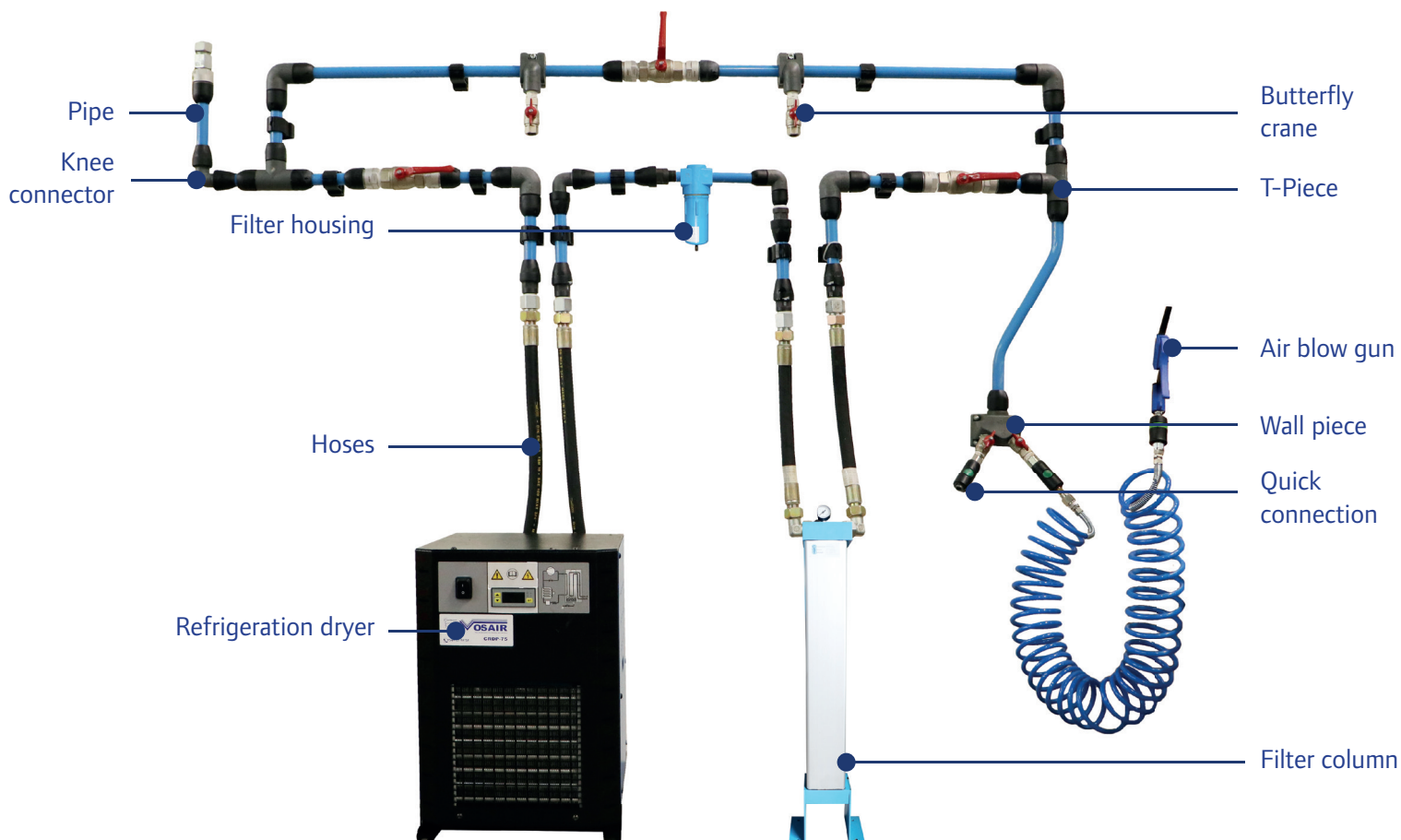
The VOSAIR piping system is designed with Leakproof Connections that prevent loss of flow and energy. The corrosion-resistant aluminum pipes and airtight connections guarantee a smooth and durable supply of compressed air throughout the network.

Losses due to friction are reduced to a minimum.

## Dynamic design

The ideal pipe network can be connected to any existing network and can be easily modified to accommodate changes.

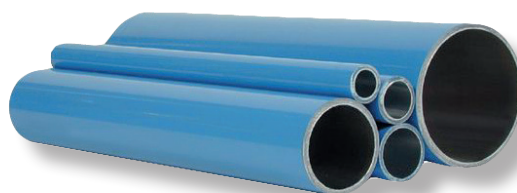
VOSAIR has the answer to these needs, providing a wide variety of interchangeable and reusable Connections designed to support layout and capacity upgrades.



The pipes have dimensions ranging from 20 mm to 80 mm. They are made of corrosion resistant aluminum. They are suitable for use up to 16 Bar.

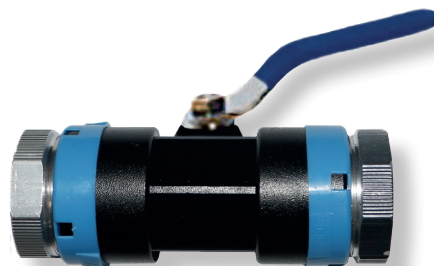
## Pipes

| Type        | Order number |
|-------------|--------------|
| Pipe 20 ALM | 108-00549    |
| Pipe 25 ALM | 108-00444    |
| Pipe 40 ALM | 108-00452    |
| Pipe 50 ALM | 108-00520    |
| Pipe 63 ALM | 108-00443    |
| Pipe 80 ALM | 108-00498    |



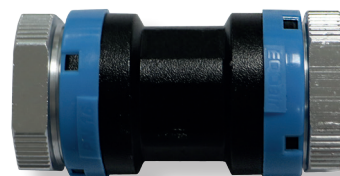
## Connectors

| Type                      | Ø     |
|---------------------------|-------|
| Connector with ball valve | 20 mm |
| Connector with ball valve | 25 mm |
| Connector with ball valve | 40 mm |
| Connector with ball valve | 63 mm |



The connectors have a push-fit system with seals and stainless steel grip rings. Its smooth bore allows for extremely large airflows.

| Type         | Ø     | Order number |
|--------------|-------|--------------|
| Connector VA | 20 mm | 110-00868    |
| Connector VA | 25 mm | 110-00805    |
| Connector VA | 40 mm | 110-00825    |
| Connector VA | 63 mm | 110-00807    |
| Connector VA | 80 mm | 110-00838    |



The T-pieces are suitable for making airtight connections between several pipes.

## T-Pieces

| Type    | Ø     | Order number |
|---------|-------|--------------|
| T-Piece | 20 mm | 110-00865    |
| T-Piece | 25 mm | 110-00800    |
| T-Piece | 40 mm | 110-00828    |
| T-Piece | 63 mm | 110-00806    |
| T-Piece | 80 mm | 110-00839    |



| Type                  | Ø and connection | Order number |
|-----------------------|------------------|--------------|
| T-Piece Female thread | 20 mm x 1/2"     | 110-00869    |
| T-Piece Female thread | 25 mm x 1/2"     | 110-00804    |
| T-Piece Female thread | 25 mm x 3/4"     | 110-00891    |
| T-Piece Female thread | 40 mm x 1"       | 110-00873    |
| T-Piece Female thread | 40 mm x 1 1/4"   | 110-00902    |
| T-Piece Female thread | 63 mm x 2"       | 110-00813    |



## Wall pieces

| Type                    | Ø and connection | Order number |
|-------------------------|------------------|--------------|
| Wall piece + ball valve | 20 mm x 1/2"     | 110-00892    |
| Wall piece + ball valve | 25 mm x 1/2"     | 110-00898    |

The wall piece distributes the air to the desired connection, such as a hose with a blow gun or your machine. This wall piece differs from other wall pieces because of the ball valve. This wall piece stops the air supply so that you can easily disconnect your hose or machine.



The flamco BRS pipe clamps are equipped with sound-damping interior, made of black EPDM rubber. The clamps are aging resistant.

## Flamco

| Type         | Ø and connection threaded end | Order number |
|--------------|-------------------------------|--------------|
| Flamco clamp | 20-24 mm x M8                 | 108-00087    |
| Flamco clamp | 25-28 mm x M8                 | 108-00112    |
| Flamco clamp | 38-42 mm x M8                 | 108-00114    |
| Flamco clamp | 62-64 mm x M8                 | 108-00279    |
| Flamco clamp | 75-80 mm x M8                 | 108-00502    |



The air blow gun is simply attached to the hose reel. We have several blow guns, depending on the applications, type and size of your installation, a suitable blow gun is selected.

## Air blow guns

| Type                       | Order number |
|----------------------------|--------------|
| Nozzle air blow gun 500 mm | 109-00153    |
| Air blow gun silent        | 109-00037    |
| Air blow gun standard      | 109-00036    |



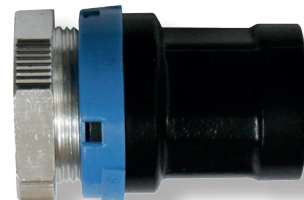
The pipes have dimensions from 20 mm to 80 mm. They are made of corrosion resistant aluminum. The pipes are suitable for use up to 16 Bar.

## Connectors

| Type                  | Ø and connection | Order number |
|-----------------------|------------------|--------------|
| Connector male thread | 20 mm x 1/2"     | 110-00870    |
|                       | 20 mm x 3/4"     | 110-00864    |
| Connector male thread | 25 mm x 1/2"     | 110-00890    |
|                       | 25 mm x 3/4"     | 110-00830    |
|                       | 25 mm x 1"       | 110-00819    |
| Connector male thread | 40 mm x 1 1/4"   | 110-00831    |
|                       | 40 mm x 1 1/2"   | 110-00832    |
| Connector male thread | 63 mm x 1 1/2"   | 110-00810    |
|                       | 63 mm x 2"       | 110-00801    |
| Connector male thread | 80 mm x 2 1/2"   | 110-00843    |



| Type                    | Ø and connection | Order number |
|-------------------------|------------------|--------------|
| Connector female thread | 20 mm x 1/2"     | 110-00997    |
|                         | 20 mm x 3/4"     | 110-00867    |
| Connector female thread | 25 mm x 3/4"     | 110-00817    |
| Connector female thread | 40 mm x 1 1/4"   | 110-00896    |
|                         | 40 mm x 1 1/2"   | 110-00833    |
| Connector female thread | 63 mm x 2 1/2"   | 110-00834    |
| Connector female thread | 80 mm x 3"       | 110-00848    |



| Type               | Ø        |
|--------------------|----------|
| Reducing connector | 25 to 20 |
| Reducing connector | 40 to 20 |
| Reducing connector | 40 to 25 |
| Reducing connector | 63 to 40 |
| Reducing connector | 80 to 63 |

This reducing connector can be connected to a T-piece



The knee connectors have an angle of 45 or 90°.

## Knee connectors

| Type    | Ø     | Order number |
|---------|-------|--------------|
| Knee VA | 20 mm | 110-00866    |
| Knee VA | 25 mm | 110-00816    |
| Knee VA | 40 mm | 110-00826    |
| Knee VA | 63 mm | 110-00808    |
| Knee VA | 80 mm | 110-00841    |



| Type             | Ø and connection | Ø and connection | Ø and connection |
|------------------|------------------|------------------|------------------|
| Knee Male thread | 20 mm x 1/2"     |                  |                  |
| Knee Male thread | 25 mm x 1/2"     | 25 mm x 3/4"     |                  |
| Knee Male thread | 40 mm x 1 1/4"   | 40 mm x 1 1/2"   | 40 mm x 2"       |
| Knee Male thread | 63 mm x 2"       |                  |                  |



| Type     | Ø     |
|----------|-------|
| Knee 45° | 20 mm |
| Knee 45° | 25 mm |
| Knee 45° | 40 mm |
| Knee 45° | 63 mm |
| Knee 45° | 80 mm |





The air reels provide access to compressed air at any location. The flexible hose gives freedom of movement, the automatic retractor with blocking system ensures that the hose always remains at the desired length and is neatly rolled up after work.

## Air reels

| Type              | Ø slang | Pressure | Connection | Order number |
|-------------------|---------|----------|------------|--------------|
| Air reel 6 meter  | 8 mm    | 10 Bar   | 1/4"       | 109-00505    |
| Air reel 16 meter | 8 mm    | 15 Bar   | 1/4"       | 109-00161    |
| Air reel 12 meter | 8 mm    | 20 Bar   | 1/4"       | 109-00111    |



A quick connector is an automatically operating valve. Connecting and disconnecting accessories can be done effortlessly and safely while the pipeline is still under pressure. Below you will find an overview of the most commonly used quick connectors.

## Quick connectors

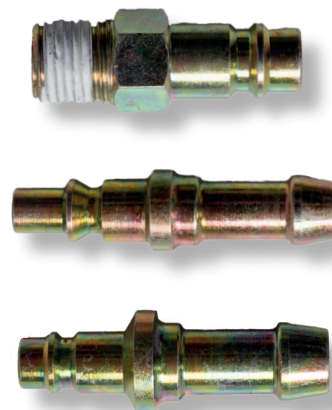
| Type                           | Connection         | Order number |
|--------------------------------|--------------------|--------------|
| Quick connector C-320 Slider   | 1/4" Male thread   | 109-00245    |
| Quick connector C-320 Slider   | 1/2" Female thread | 109-00107    |
| Quick connector C-320 Pressure | 3/8" Female thread | 109-00154    |
| Quick connector C-320 Pressure | 3/8" Female thread | 109-00310    |
| Quick connector C-320 Slider   | 3/8" Female thread | 109-00045    |
| Quick connector Orion Slider   | 3/8" Female thread | 109-00223    |
| Quick connector Orion Pressure | 3/8" Female thread | 109-00113    |



A plug-in nipple is an attachment to connect a safety coupling to a hose. A plug-in nipple is fitted in the speed coupling that clamps the hose.

## Plug-in nipples

| Type                 | Connection            | Order number |
|----------------------|-----------------------|--------------|
| Plug-in nipple C-320 | 1/4" Male thread      | 109-00035    |
| Plug-in nipple C-320 | 1/2" Male thread      | 109-00274    |
| Plug-in nipple C-320 | 3/8" Male thread      | 109-00273    |
| Plug-in nipple C-320 | 6 mm Hose connection  | 109-00044    |
| Plug-in nipple C-320 | 8 mm Hose connection  | 109-00108    |
| Plug-in nipple C-320 | 10 mm Hose connection | 109-00034    |
| Plug-in nipple C-320 | 12 mm Hose connection | 109-00046    |
| Plug-in nipple Orion | 1/4" Male thread      | 109-00116    |
| Plug-in nipple Orion | 8 mm Hose connection  | 109-00115    |
| Plug-in nipple Orion | 10 mm Hose connection | 109-00114    |



The low pressure filter housings form the holder for a filter element. This filter element has the function of separating oil particles and removing dust and dirt particles from the compressed air.

## Filter housings

| Type                               | Connection | Order number |
|------------------------------------|------------|--------------|
| Filter housing 15 Fine filter      | 1/2"       | 101-00959    |
| Filter housing 15 Activated carbon | 1/2"       | 101-00961    |
| Filter housing 20 Fine filter      | 3/4"       | 101-00977    |
| Filter housing 20 Activated carbon | 3/4"       | 101-00974    |
| Filter housing 26 Fine filter      | 1"         | 101-00968    |
| Filter housing 26 Activated carbon | 1"         | 101-00978    |
| Filter housing 41 Fine filter      | 1 1/2"     | 101-00979    |
| Filter housing 41 Activated carbon | 1 1/2"     | 101-00980    |



With a reducer/pressure regulator you have the option of adjusting the pressure within your air piping system yourself.

| Type    | Pressure input | Pressure output | Connection | Order number |
|---------|----------------|-----------------|------------|--------------|
| Reducer | 18 Bar         | 0-13 Bar        | 1/2"       | 119-00339    |
| Reducer | 18 Bar         | 0-18 Bar        | 1"         | 119-00340    |

### Pressure regulator



The air pressure in the air piping system is measured with the pressure. Measuring pressure is important to monitor the quality of a process, but also to be able to see leaks or pressure build-up.

### Pressure gauges

| Type                                 | Pressure | Connection             | Order number |
|--------------------------------------|----------|------------------------|--------------|
| Pressure gauge glycerin - RVS - K63  | 10 Bar   | 1/4" Bottom connection | 112-00017    |
| Pressure gauge glycerin - RVS - K63  | 16 Bar   | 1/4" Bottom connection | 112-00020    |
| Pressure gauge glycerin - RVS - K100 | 16 Bar   | 1/2" Bottom connection | 112-00024    |



With a ball valve, the flow and/or shut-off can be regulated by means of a ball.  
The ball valve has internal thread with the connections below and is made of brass.

## Ball valves

### Type

Ball valve with butterfly handle  
Ball valve with butterfly handle  
Ball valve with butterfly handle  
Ball valve with long handle  
Ball valve with long handle  
Ball valve with long handle  
Ball valve with long handle  
Ball valve with long handle  
Ball valve with long handle  
Ball valve with long handle  
Ball valve with long handle

### Connection

1/4"  
1/2"  
3/8"  
1/4"  
1/2"  
3/8"  
3/4"  
1"  
1 1/4"  
1 1/2"  
2"  
2 1/2"

### Order number

120-00177  
120-00501  
120-00176  
120-00046  
120-00002  
120-00001  
120-00047  
120-00048  
120-00130  
120-00129  
120-00160  
120-00092

